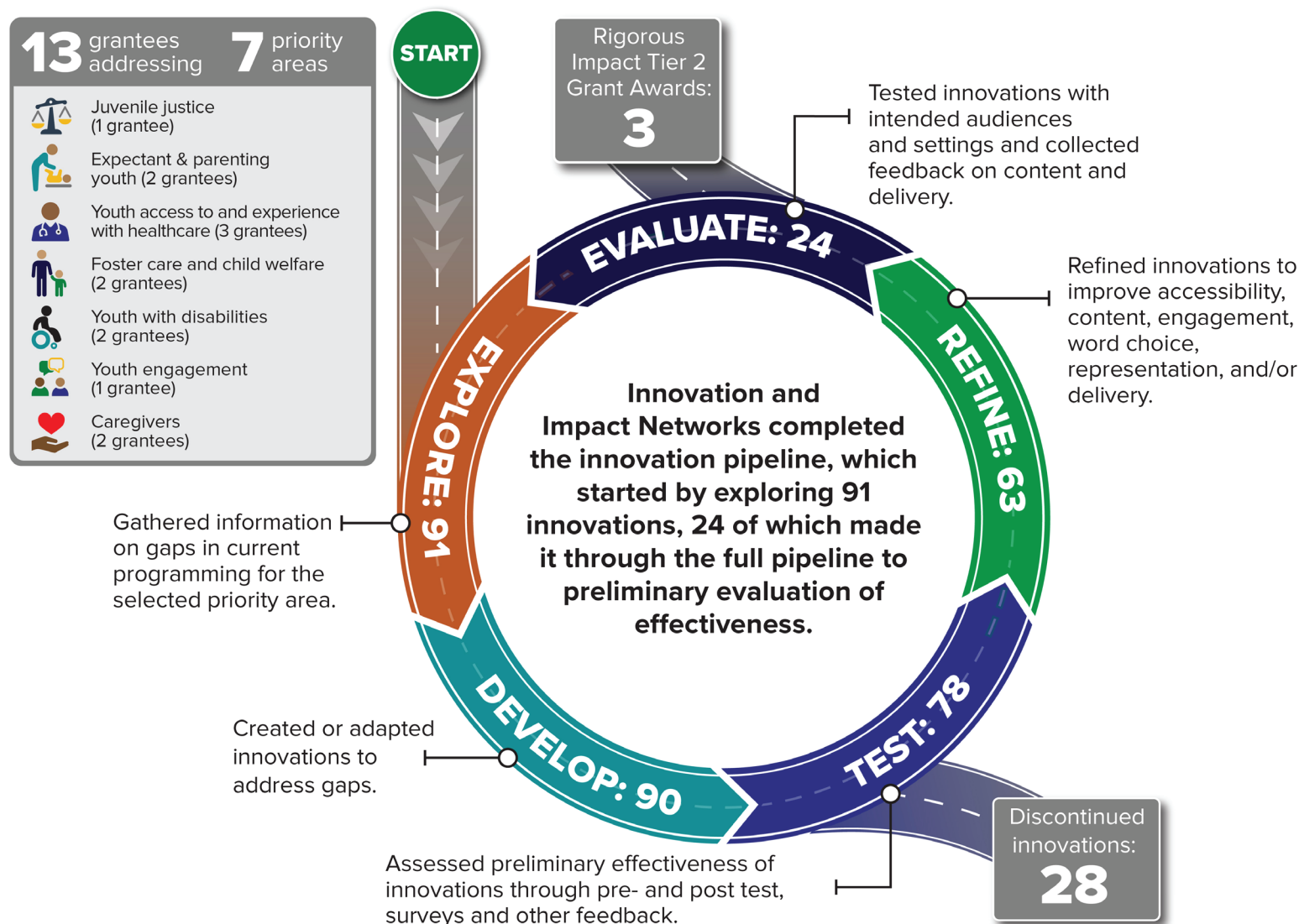


Teen Pregnancy Prevention Tier 2 Innovation and Impact Network Grants: *Developing Innovative Interventions*

How the Innovation and Impact Networks Navigated the Innovation Pipeline



This document is based on de Sousa, T., E. Elmudesi, L. Freiman, and K. Francis. *Building Networks to Develop Innovative Interventions for Teen Pregnancy Prevention: Implementation of the TPP20 Innovation and Impact Network Grants*. Washington, DC: Office of Population Affairs, Office of the Assistant Secretary for Health, U.S. Department of Health and Human Services, 2024.

This publication was supported by Award No. HHSP233201500069I/75P00121F37018 from the Office of Population Affairs (OPA). Its contents are solely the responsibility of the authors and do not necessarily represent the official views of OPA or HHS.

Suggested citation: de Sousa, T., L. Palen, L. Freiman, and K. Francis. *Teen Pregnancy Prevention Tier 2 Innovation and Impact Network Grants: Developing Innovative Interventions*. Washington, DC: Office of Population Affairs, Office of the Assistant Secretary for Health, U.S. Department of Health and Human Services, 2024.

The Innovation and Impact Networks

From 2020-2023, the Office of Population Affairs awarded 13 Teen Pregnancy Prevention Tier 2: Innovation and Impact Network grants. These grants are part of OPA's overall Tier 2 grant strategy to increase the number of promising approaches to prevent unintended teen pregnancy that can then be rigorously evaluated to expand the availability and diversity of evidence-based programs. Each Innovation and Impact Network grantee recruited and supported a collaborative, multidisciplinary network of partners, known as an Innovation and Impact Network. Grantees and their Networks used an iterative process to develop and test innovations for health promotion and the prevention of unintended teen pregnancies.

What were the key elements of the Innovation and Impact Networks?



Who made up the Innovation and Impact Networks?

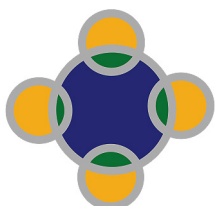


Grantees completed a **stakeholder map** to identify individuals and organizations relevant to the projects' priority and focus population (i.e., potential network partners). These maps often included:

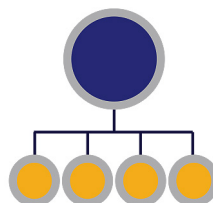
- Subject matter experts in:
 - Selected priority area
 - Trauma-informed care
 - Intervention development
 - Graphic design
 - Technology
 - Technical Assistance
- Implementation partners and sites
- External evaluators
- Community advisory groups
- Youth advisory groups
- Youth, adults, and staff with lived experience

How were the Innovation and Impact Networks structured?

On average, each Innovation and Impact Network had **16 formal partners**. Network structures often took a co-collaborator approach or a direction setting approach.



Some **networks** co-led intervention development, testing, and refinement with **partners**.



Other **networks** provided technical assistance and other **guidance** to **partners**.